

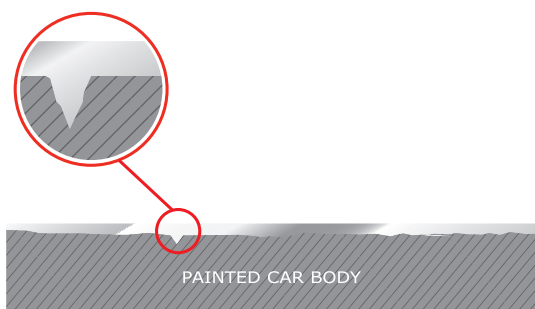
CRYSTAL SERUM LIGHT



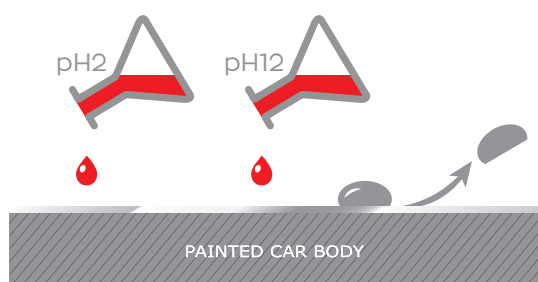
Crystal Serum Light is the prosumer version of Crystal Serum Professional, the Accredited Detailer only ceramic paint protection.

It offers unbeatable gloss, swirl resistance, and contaminant and dirt repellency when compared to other ceramic coatings.





Serum Light forms an ultra-durable, high gloss, slick to touch, chemically bonding inorganic layer of 9h optically clear ceramic. This means that once applied, your gloss levels will remain in the upper 90th percentile for significantly longer than you would get with traditional products, and cleaning your car will be a breeze.



The high density ceramic layer is resistant to chemicals ranging from pH2 to pH12. Its dense surface makes bonded contaminants such as tree sap, tar, and hard water spots much easier to remove.



Unlike mainstream wax and organic polymer coatings, Crystal Serum Light can resist much higher and lower temperatures - as low as -40°, to as high as +250°C.



For the definitive hydrophobic function overcoat with **EXO** or **C2**

* only when applied by a Gtechniq Accredited Detailer

service.gtechniq.com

Follow us:



GTECHNIQ
SMART SURFACE SCIENCE